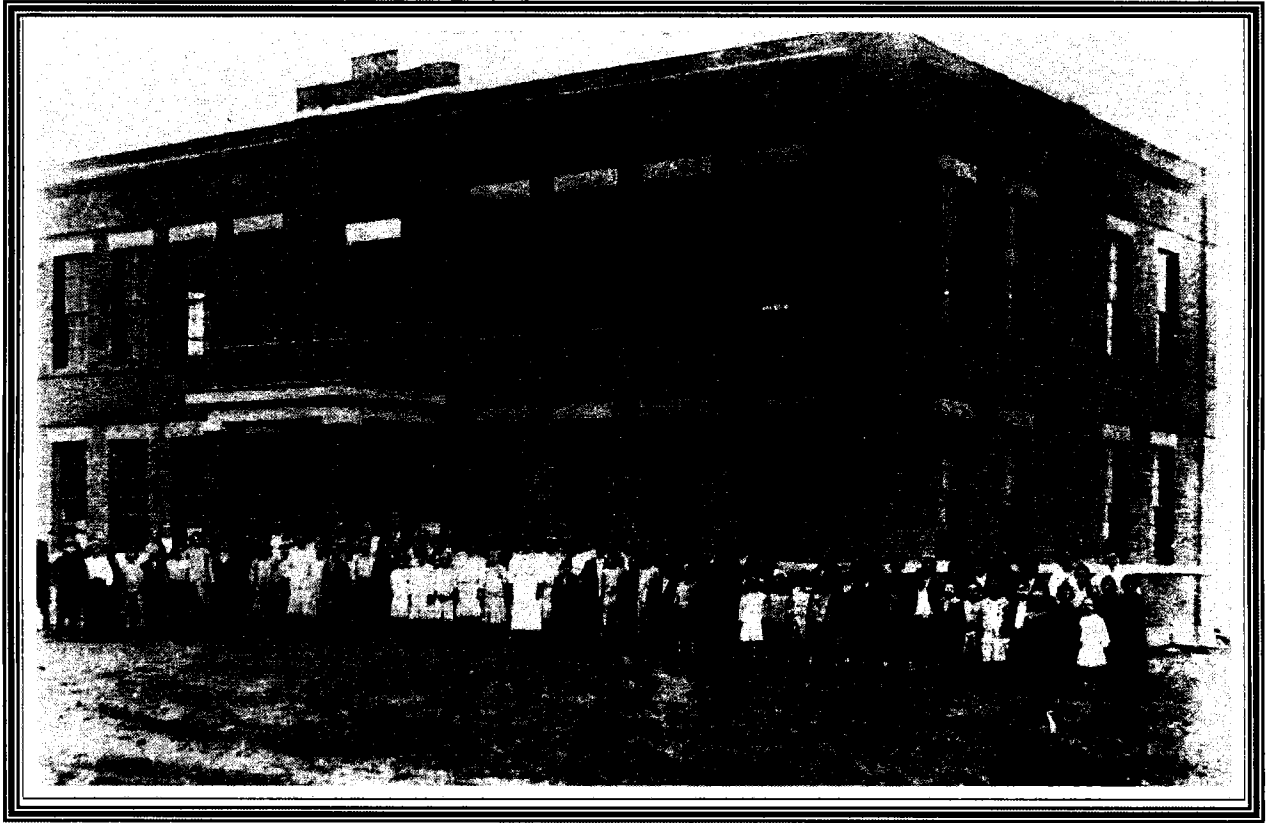


# TEXAS HISTORICAL MARKER DEDICATION



## EULESS SCHOOL

1914-1955

SUNDAY, OCTOBER 24, 2010

2:30 P.M.

SOUTH EULESS ELEMENTARY SCHOOL

605 SOUTH MAIN STREET

EULESS, TEXAS

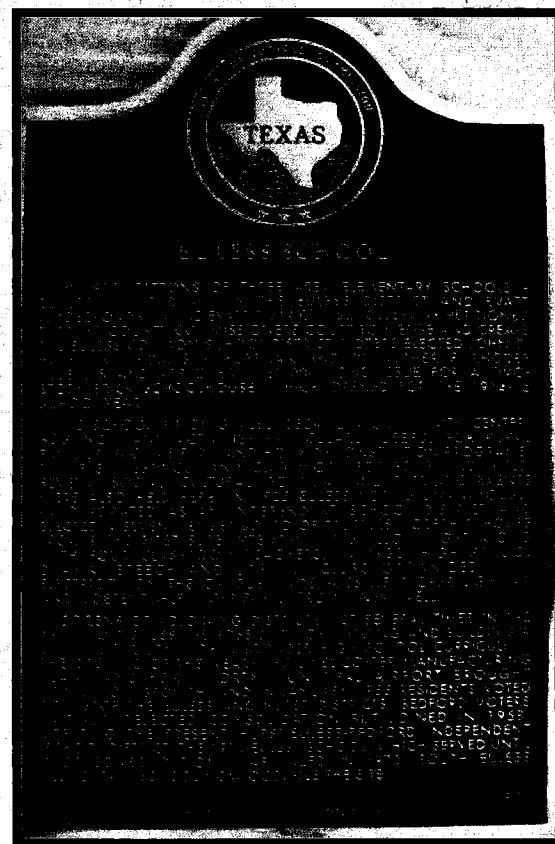
## Text of Historical Marker

### EULESS SCHOOL

IN 1913, PATRONS OF THREE AREA ELEMENTARY SCHOOLS—EULESS AND TARRANT IN THE EULESS DISTRICT AND EVART (CROSSROADS) IN THE EVART DISTRICT—SUCCESSFULLY PETITIONED THE EULESS COMMON SCHOOL DISTRICT. VOTERS ELECTED JOHN D. HUFFMAN, THOMAS P. HUFFMAN AND DR. LUTHER F. RHODES TRUSTEES AND APPROVED A \$7,000 BOND ISSUE FOR A TWO-STORY BRICK SCHOOLHOUSE, WHICH OPENED FOR THE 1914-1915 SCHOOL YEAR.

THE SCHOOL BUILDING ALSO BECAME A COMMUNITY CENTER, HOSTING MANY ACTIVITIES PARTICULARLY USEFUL FOR RURAL FAMILIES, SUCH AS FARM AND HOME DEMONSTRATION PROGRAMS, FARMERS' MEETINGS, AND CLUB WORK FOR BOYS AND GIRLS. SEVERAL SOCIAL, CULTURAL, POLITICAL AND PATRIOTIC EVENTS WERE ALSO HELD THERE. IN 1925 EULESS VOTERS UNANIMOUSLY INCORPORATED AS AN INDEPENDENT SCHOOL DISTRICT AND ELECTED A SEVEN MEMBER BOARD OF TRUSTEES. JOSEPH T. HOUSE BECAME THE FIRST SUPERINTENDENT AND ALSO TAUGHT ALONG WITH FOUR CLASSROOM TEACHERS. IN 1932, HIGH SCHOOL DRAMA, SPEECH AND LITERACY CLUBS ORGANIZED, AND ELECTRICITY ON THE CAMPUS MADE POSSIBLE PROPER LIGHTING AND A DEPENDABLE WATER SUPPLY FROM A NEW WELL.

CITIZENS OF ADJOINING DISTRICTS MET SEVERAL TIMES IN THE 1940s TO DISCUSS THE POSSIBILITY OF MERGING AND BUILDING A CENTRAL FACILITY WITH A BROADER HIGH SCHOOL CURRICULUM. THE OPENING OF THE NEARBY BELL HELICOPTER MANUFACTURING PLANT AND FORT WORTH MUNICIPAL AIRPORT BROUGHT POPULATION GROWTH, AND IN JANUARY 1955 RESIDENTS VOTED TO MERGE THE EULESS AND HURST DISTRICTS. BEDFORD VOTERS INITIALLY REJECTED CONSOLIDATION BUT JOINED IN 1958, CREATING THE PRESENT HURST-EULESS-BEDFORD INDEPENDENT SCHOOL DISTRICT. THE 1914 EULESS SCHOOL, WHICH SERVED UNTIL 1955 CONSOLIDATION, WAS RAZED IN 1970. SOUTH EULESS ELEMENTARY SCHOOL NOW OCCUPIES THE SITE.



# Program

OPENING REMARKS ..... BETTY FULLER  
*CHAIRMAN, EULESS HISTORICAL PRESERVATION COMMITTEE*  
*EULESS HIGH SCHOOL GRADUATE 1950*

PLEDGE OF ALLEGIANCE ..... KENZIE CREWS  
*STUDENT, SOUTH EULESS ELEMENTARY SCHOOL*

CALL TO REMEMBRANCE & INVOCATION ..... THE REV. DR. BRUCE WEAVER  
*EULESS SCHOOL TEACHER 1947-1949*  
*PASTOR EULESS METHODIST CHURCH 1945-1949*

WELCOME & REMARKS ..... MARY LIB SALEH  
*MAYOR, CITY OF EULESS*

RANDY BELCHER  
*PRINCIPAL, SOUTH EULESS ELEMENTARY SCHOOL*

BRENT MORTON  
*CHAIRMAN, TARRANT COUNTY HISTORICAL COMMISSION*

DR. GENE BUINGER  
*SUPERINTENDENT, HURST-EULESS-BEDFORD INDEPENDENT SCHOOL DISTRICT*

HISTORICAL STATEMENT ..... DR. WELDON G. CANNON  
*PROFESSOR EMERITUS OF HISTORY, TEMPLE COLLEGE*  
*EULESS HIGH SCHOOL GRADUATE 1951*

MARKER UNVEILING ..... SUSAN TAYLOR  
*MARKER CHAIRMAN, TARRANT COUNTY HISTORICAL COMMISSION*  
RANDY BELCHER, PRINCIPAL & SALLY BEN, STUDENT  
*SOUTH EULESS ELEMENTARY SCHOOL*

MUSICAL PERFORMANCE ..... SOUTH EULESS ELEMENTARY CHOIR  
*DIRECTED BY JEFF BROOKS*  
SOUTH EULESS ELEMENTARY SUZUKI STRINGS  
*DIRECTED BY PATTI PURCELL*

CLOSING REMARKS ..... BETTY FULLER  
*CHAIRMAN, EULESS HISTORICAL PRESERVATION COMMITTEE*

RECEPTION ..... SOUTH EULESS ELEMENTARY SCHOOL  
*HOSTED BY THE SOUTH EULESS ELEMENTARY SCHOOL PTA*

# **ACKNOWLEDGEMENTS**

## **TEXAS HISTORICAL COMMISSION**

MARK WOLFE, EXECUTIVE DIRECTOR

## **TARRANT COUNTY COMMISSIONERS COURT**

GLEN WHITLEY, JUDGE ★ ROY C. BROOKS, PRECINCT 1  
MARTI VANRAVENSWAAY, PRECINCT 2 ★ GARY FICKES, PRECINCT 3  
J.D. JOHNSON, PRECINCT 4

## **TARRANT COUNTY HISTORICAL COMMISSION**

BRENT MORTON CHAIRMAN  
SUSAN TAYLOR, MARKER CHAIRMAN

## **CITY OF EULESS CITY COUNCIL**

MARY LIB SALEH, MAYOR ★ LINDA MARTIN, MAYOR PRO TEM  
TIM STINNEFORD, PLACE 1 ★ LEON HOGG, PLACE 2 ★ DONNA MICKAN, PLACE 4  
GLEN PORTERFIELD, PLACE 5 ★ PERRY BYNUM, PLACE 6

## **CITY OF EULESS HISTORICAL PRESERVATION COMMITTEE**

BETTY FULLER, CHAIRMAN

## **HURST-EULESS-BEDFORD INDEPENDENT SCHOOL DISTRICT**

### **BOARD OF TRUSTEES**

JEFF BURNETT, PRESIDENT ★ KAY MILLER, PLACE 1  
JIM SCHOOLER, PLACE 3 ★ ELLEN JONES, PLACE 4 ★ FAYE BEAULIEU, PLACE 5  
ANDY CARGILE, PLACE 6 ★ MARK CYRIER, PLACE 7  
DR. GENE BUINGER, SUPERINTENDENT

## **SOUTH EULESS ELEMENTARY SCHOOL**

RANDY BELCHER, PRINCIPAL, THE PARENT-TEACHER ASSOCIATION,  
THE SOUTH EULESS ELEMENTARY CHOIR AND SUZUKI STRINGS PROGRAM

## **RESEARCH HISTORIAN**

WELDON CANNON

## **MARKER SPONSOR**

CITY OF EULESS